

Stair Design FAQ and the Cut Stair Tool

Always practice with the cut-stair. Not learning to use the cut-stair will not adequately prepare you for the real exam. You cannot go wrong by using the cut-stair (correctly). Better to be prepared to use it and not need it than the other way around.

Show the cut-stair on both levels. It is not a matter of “what you can see” from a particular viewpoint. The cut-stair is a symbol that indicates “continued beyond”. Show it going up on the lower level, and show it going down on the upper level on the same flight of stairs. This is standard drafting convention...always has been even though some folks don't follow it.

Stop handrails at the break-line in the cut-stair.

NCARB CODES ILLUSTRATED

PROGRAM

1. Design the stairway to serve as a means of egress from all three building levels leading into the stairwell and through the exit discharge door to the sidewalk at grade (a public way).

EGRESS ROUTES

ADEQUATE HEADROOM CLEARANCE PROVIDED BELOW 9'-7" LANDING.

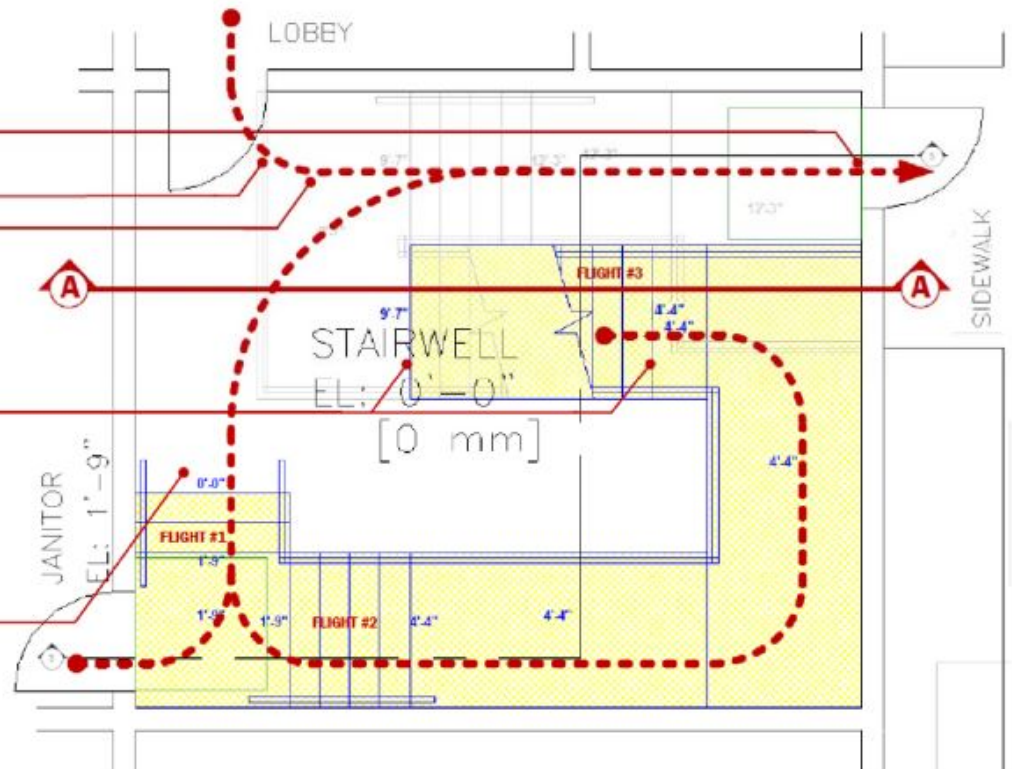
VIGNETTE DIRECTIONS

- When using the cut stair tool, the flight of stairs should be drawn from landing to landing or from ground floor to landing.

IF CUT STAIR IS USED, SHOW IT ON THE GROUND FLOOR GOING UP, AND THE 2ND FLOOR GOING DOWN. SHOW IT ON THE SAME FLIGHT AND DRAW NOTHING BEYOND IT.

NOTE:

NO NEED FOR A 0'-0" LANDING AT GROUND FLOOR.



Stair Design – Ground Floor Plan, Egress and Cut Stair

SCALE: 1/4" = 1' - 0"

NCARB CODES ILLUSTRATED

PROGRAM

The stairway must provide a single continuous path from Second floor to Ground floor exit that includes a landing at the Intermediate level.

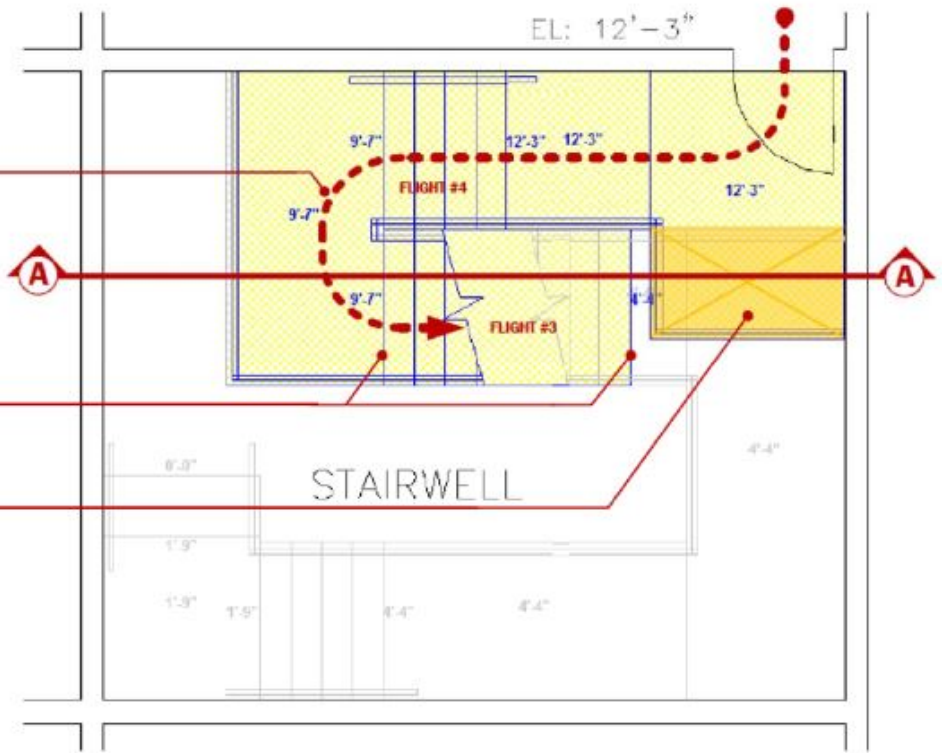
EGRESS ROUTE

VIGNETTE DIRECTIONS

- When using the cut stair tool, the flight of stairs should be drawn from landing to landing or from ground floor to landing.

STOP HANDRAILS AT THE CUT LINE

ADEQUATE HEADROOM CLEARANCE PROVIDED BELOW LANDING AT 2ND FLOOR.



Stair Design – Second Floor Plan, Egress and Cut Stair

SCALE: 1/4" = 1' - 0"